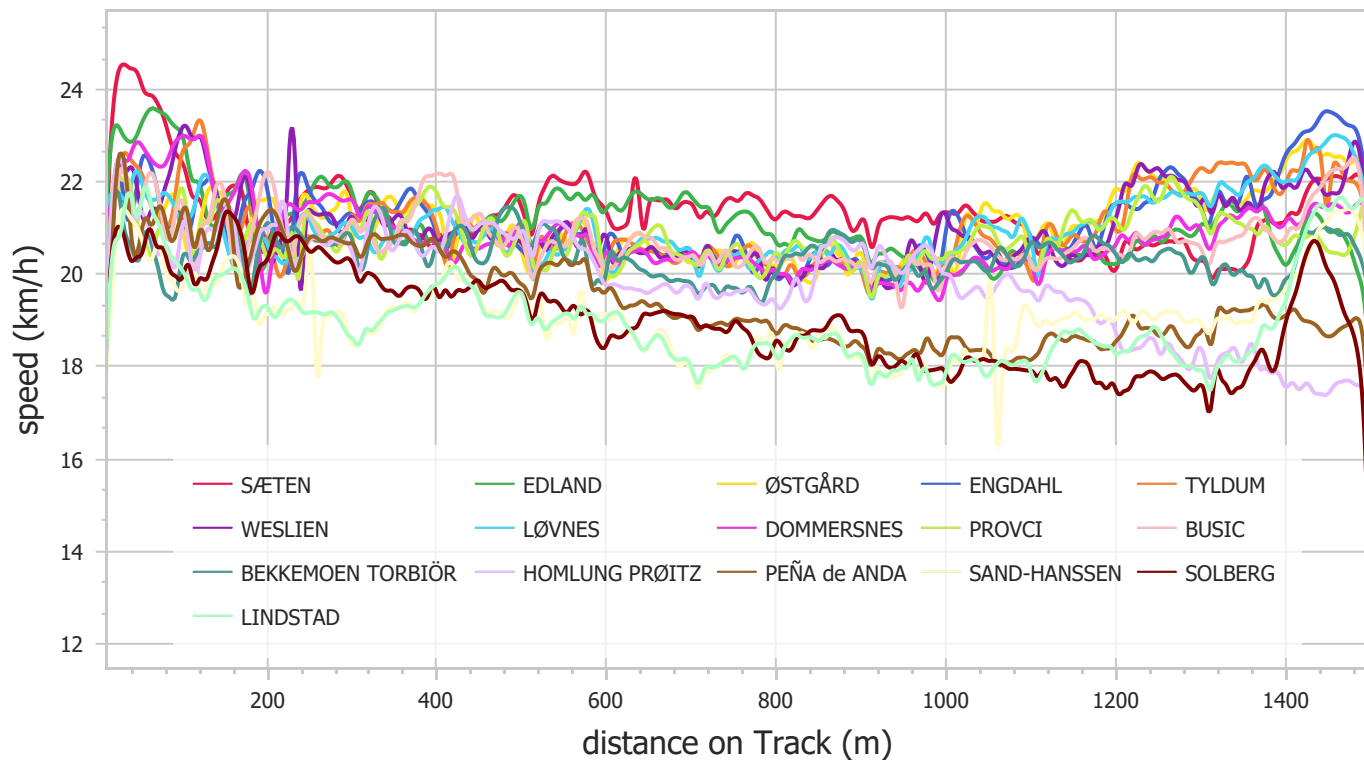


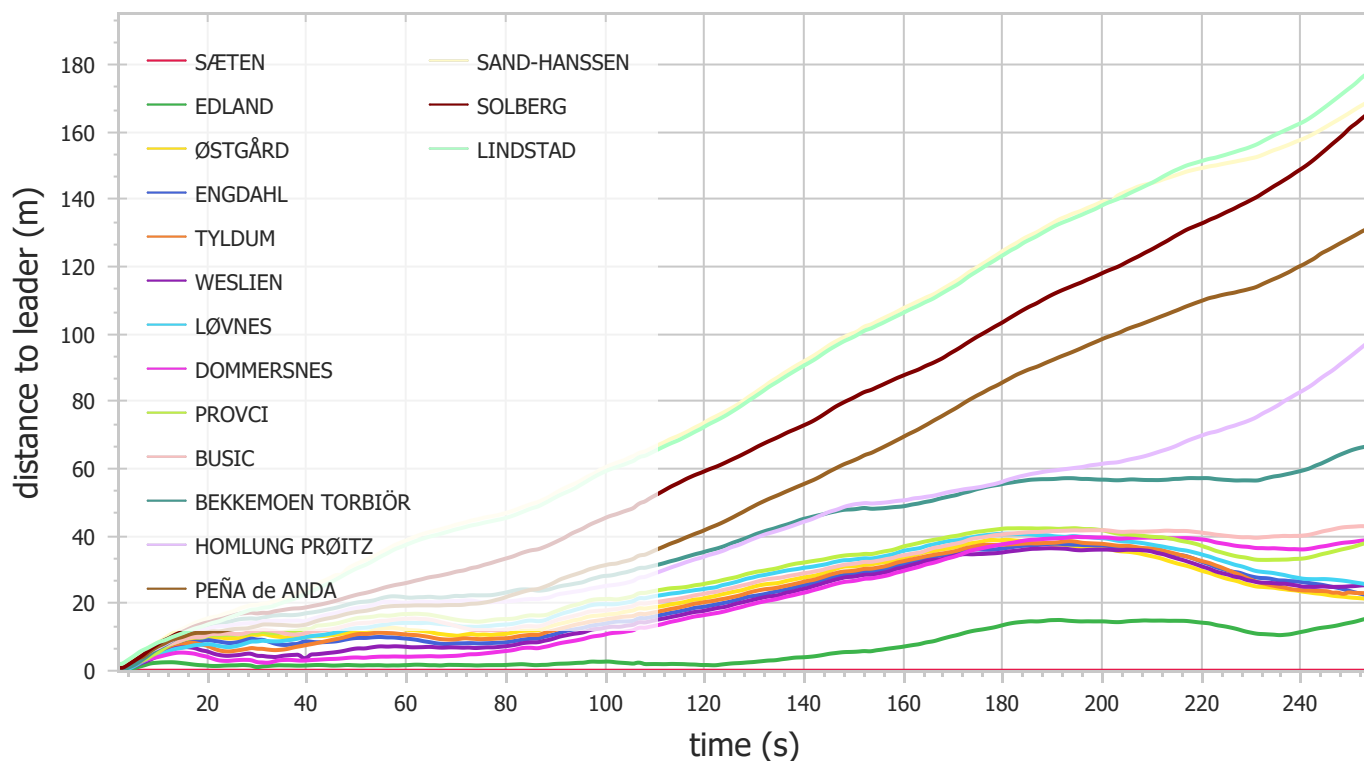
Oslo 2023 - Race Analysis

1500m Women National (Thu 15 Jun 2023)

Speed



Distance to leader



Oslo 2023 - Race Analysis

1500m Women National (Thu 15 Jun 2023)

Split Times

	100m	300m	500m	700m	900m	1100m	1300m	Finish
SÆTEN	16.25	49.72	1:23.78	1:57.16	2:30.79	3:04.78	3:39.88	4:13.97
EDLAND	16.57	49.99	1:24.10	1:57.46	2:31.77	3:07.35	3:42.35	4:16.84
ØSTGÅRD	17.70	51.60	1:25.82	2:00.83	2:36.32	3:11.32	3:44.80	4:17.32
ENGD AHL	17.65	51.35	1:25.40	2:00.37	2:35.95	3:11.37	3:45.22	4:17.44
TYLDUM	17.58	51.55	1:25.60	2:00.61	2:36.10	3:11.45	3:45.25	4:17.74
WESLIEN	17.34	50.83	1:25.21	2:00.16	2:35.78	3:11.13	3:45.02	4:17.98
LØVNES	17.47	51.86	1:26.31	2:01.30	2:36.64	3:11.74	3:45.62	4:18.04
DOMMERSNES	17.08	50.37	1:24.94	1:59.94	2:35.58	3:11.66	3:46.54	4:20.42
PROVCI	17.86	52.39	1:26.60	2:01.58	2:36.89	3:12.15	3:46.03	4:20.51
BUSIC	17.88	52.11	1:26.04	2:01.06	2:36.47	3:12.04	3:47.00	4:20.93
BEKKEMOEN TORBIÖR	18.39	53.20	1:27.85	2:03.34	2:39.11	3:14.80	3:50.00	4:25.50
HOMLUNG PRØITZ	18.23	52.95	1:27.44	2:03.11	2:39.42	3:15.38	3:53.58	4:34.10
PEÑA de ANDA	18.08	52.74	1:28.03	2:04.69	2:43.01	3:22.35	4:00.99	4:38.95
SAND-HANSEN	18.68	55.67	1:32.91	2:11.12	2:50.44	3:30.26	4:08.04	4:44.22
SOLBERG	18.49	53.69	1:30.19	2:07.96	2:46.41	3:26.31	4:06.91	4:45.94
LINDSTAD	18.35	55.43	1:32.64	2:10.89	2:50.19	3:30.28	4:09.42	4:46.08

Section Times

	100m	300m	500m	700m	900m	1100m	1300m	Finish
SÆTEN	16.25	33.47	34.06	33.38	33.63	33.99	35.10	34.09
EDLAND	16.57	33.42	34.11	33.36	34.31	35.58	35.00	34.49
ØSTGÅRD	17.70	33.90	34.22	35.01	35.49	35.00	33.48	32.52
ENGD AHL	17.65	33.70	34.05	34.97	35.58	35.42	33.85	32.22
TYLDUM	17.58	33.97	34.05	35.01	35.49	35.35	33.80	32.49
WESLIEN	17.34	33.49	34.38	34.95	35.62	35.35	33.89	32.96
LØVNES	17.47	34.39	34.45	34.99	35.34	35.10	33.88	32.42
DOMMERSNES	17.08	33.29	34.57	35.00	35.64	36.08	34.88	33.88
PROVCI	17.86	34.53	34.21	34.98	35.31	35.26	33.88	34.48
BUSIC	17.88	34.23	33.93	35.02	35.41	35.57	34.96	33.93
BEKKEMOEN TORBIÖR	18.39	34.81	34.65	35.49	35.77	35.69	35.20	35.50
HOMLUNG PRØITZ	18.23	34.72	34.49	35.67	36.31	35.96	38.20	40.52
PEÑA de ANDA	18.08	34.66	35.29	36.66	38.32	39.34	38.64	37.96
SAND-HANSEN	18.68	36.99	37.24	38.21	39.32	39.82	37.78	36.18
SOLBERG	18.49	35.20	36.50	37.77	38.45	39.90	40.60	39.03
LINDSTAD	18.35	37.08	37.21	38.25	39.30	40.09	39.14	36.66

Oslo 2023 - Race Analysis

1500m Women National (Thu 15 Jun 2023)

Summary

	Lane	Starting Order	Real Distance
SÆTEN	1	12	1507.9 m
EDLAND	1	3	1500.0 m
ØSTGÅRD	1	7	1503.0 m
ENGDAHL	1	4	1507.3 m
TYLDUM	1	16	1530.2 m
WESLIEN	1	17	1534.2 m
LØVNES	1	6	1501.5 m
DOMMERSNES	1	2	1500.0 m
PROVCI	1	10	1517.8 m
BUSIC	1	1	1500.2 m
BEKKEMOEN TORBIÖR	1	15	1501.9 m
HOMLUNG PRØITZ	1	9	1509.0 m
PEÑA de ANDA	1	8	1500.0 m
SAND-HANSEN	1	13	1543.6 m
SOLBERG	1	14	1500.0 m
LINDSTAD	1	5	1500.0 m

Did Not Start: RUUD

Did Not Finish: MJÅLAND