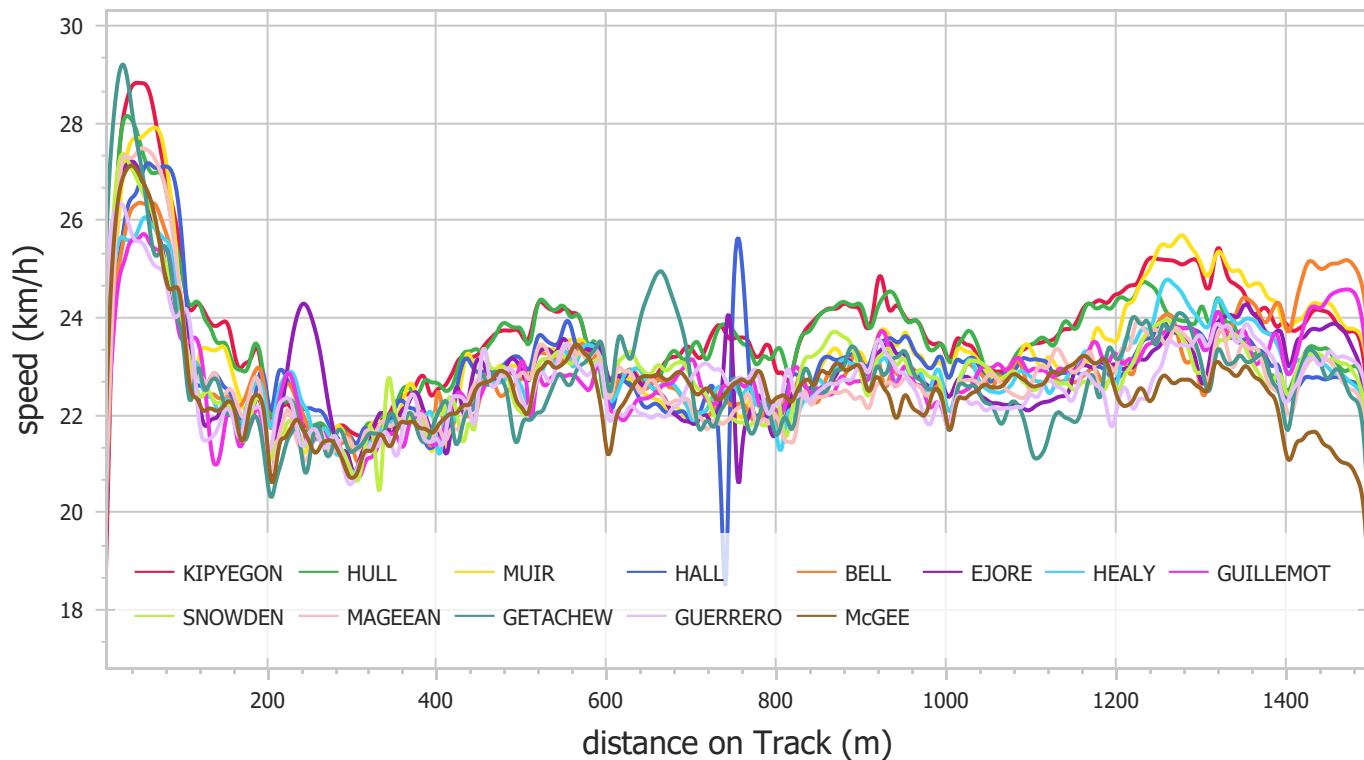


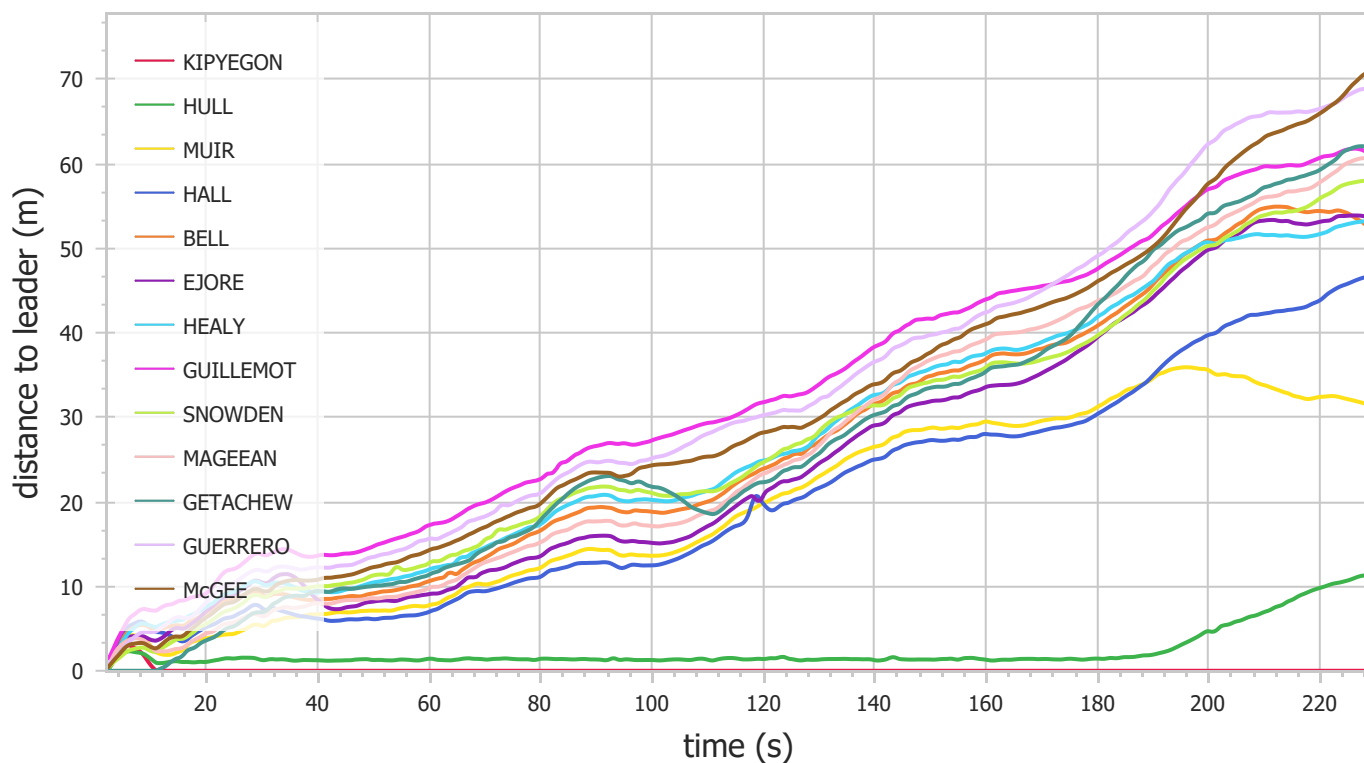
Paris 2024 - Race Analysis

1500m Women (Sun 07 Jul 2024)

Speed



Distance to leader



Paris 2024 - Race Analysis

1500m Women (Sun 07 Jul 2024)

Split Times

	100m	300m	500m	700m	900m	1100m	1300m	Finish
KIPYEGON	14.38	46.08	1:17.80	1:48.64	2:19.15	2:49.70	3:19.15	3:49.04
HULL	14.55	46.29	1:18.00	1:48.87	2:19.35	2:49.90	3:19.82	3:50.83
MUIR	14.69	47.24	1:19.65	1:51.15	2:23.24	2:54.26	3:24.19	3:53.79
HALL	14.92	47.09	1:19.48	1:51.03	2:22.99	2:54.13	3:25.13	3:56.40
BELL	15.17	47.54	1:20.34	1:51.82	2:24.04	2:55.69	3:26.90	3:56.54
EJORE	15.13	47.36	1:19.86	1:51.36	2:23.65	2:55.39	3:26.72	3:57.26
HEALY	15.26	47.74	1:20.46	1:52.03	2:24.20	2:55.85	3:26.60	3:57.46
GUILLEMOT	15.61	48.46	1:21.31	1:53.23	2:25.18	2:56.80	3:27.75	3:58.05
SNOWDEN	14.93	47.86	1:20.62	1:51.95	2:23.96	2:55.50	3:26.80	3:58.13
MAGEEAN	14.76	47.47	1:20.12	1:51.62	2:24.24	2:56.20	3:27.12	3:58.69
GETACHEW	14.58	47.71	1:20.55	1:51.53	2:23.81	2:55.82	3:27.28	3:58.98
GUERRERO	15.31	48.25	1:21.05	1:53.10	2:24.88	2:56.98	3:28.71	3:59.74
McGEE	14.97	48.04	1:20.86	1:52.62	2:24.42	2:56.52	3:28.20	4:01.18

Section Times

	100m	300m	500m	700m	900m	1100m	1300m	Finish
KIPYEGON	14.38	31.70	31.72	30.84	30.51	30.55	29.45	29.89
HULL	14.55	31.74	31.71	30.87	30.48	30.55	29.92	31.01
MUIR	14.69	32.55	32.41	31.50	32.09	31.02	29.93	29.60
HALL	14.92	32.17	32.39	31.55	31.96	31.14	31.00	31.27
BELL	15.17	32.37	32.80	31.48	32.22	31.65	31.21	29.64
EJORE	15.13	32.23	32.50	31.50	32.29	31.74	31.33	30.54
HEALY	15.26	32.48	32.72	31.57	32.17	31.65	30.75	30.86
GUILLEMOT	15.61	32.85	32.85	31.92	31.95	31.62	30.95	30.30
SNOWDEN	14.93	32.93	32.76	31.33	32.01	31.54	31.30	31.33
MAGEEAN	14.76	32.71	32.65	31.50	32.62	31.96	30.92	31.57
GETACHEW	14.58	33.13	32.84	30.98	32.28	32.01	31.46	31.70
GUERRERO	15.31	32.94	32.80	32.05	31.78	32.10	31.73	31.03
McGEE	14.97	33.07	32.82	31.76	31.80	32.10	31.68	32.98

Paris 2024 - Race Analysis

1500m Women (Sun 07 Jul 2024)

Summary

	Lane	Starting Order	Real Distance
KIPYEGON	1	16	1511.3 m
HULL	1	9	1508.9 m
MUIR	1	12	1513.5 m
HALL	1	10	1513.6 m
BELL	1	7	1516.6 m
EJORE	1	4	1567.1 m
HEALY	1	5	1516.9 m
GUILLEMOT	1	6	1510.1 m
SNOWDEN	1	3	1519.5 m
MAGEEAN	1	11	1560.8 m
GETACHEW	1	1	1514.9 m
GUERRERO	1	2	1507.5 m
McGEE	1	8	1516.9 m

Did Not Finish: GARCÍA, PIZZO, GALANT